



# GLEDOPTO

## ZIGBEE PRO MINI CONTROLLER

### User Instruction



#### Overview

This product is a mini LED strip controller that can be controlled using HUE, SmartThings, Tuya and other Zigbee gateways. It can also be paired with an 2.4G RF remote control to adjust the light strip's color, color temperature, and brightness. Additionally, it has button controls for turning the light strip on/off and adjusting brightness and color.

#### Specifications

Input voltage: DC 5V/DC 12V  
Input current: 2A  
Size: 303x23x12mm

Waterproof rating: IP20  
Material: PC  
Working temp: -20°C~45°C

##### DC: 5V



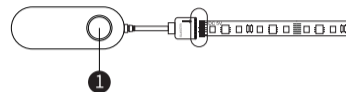
##### DC: 12V



LED-Trading Tobias Ebert  
Schoeneicher Str. 42, Schoeneiche b. Berlin, Germany, 15566  
0049 30 641 689 17 info@led-trading.de

#### Wiring Method

Align the positive electrode of the light strip with the arrow on the terminal of the controller, and insert it tightly to connect.



#### 1 Button functions:

1. Press briefly once: Turn on/off the light strip.
2. Press briefly twice: Enter brightness adjustment mode. After entering the mode, each brief press increases the brightness by 20%. When the brightness reaches 100%, pressing again will return to the lowest brightness. Stop pressing for 5 seconds to exit the brightness adjustment mode.
3. Press briefly three times: Enter color adjustment mode. After entering the color adjustment mode, each brief press cycles through the following 9 colors (warm white - warm-cold white - cold white - red - yellow - green - light blue - blue - purple). Stop pressing for 5 seconds to exit the color adjustment mode.
4. Long press for 5 seconds or more: Reset the mini light strip controller.

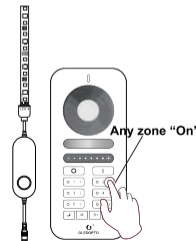
#### Gateway Control

##### Joining the network:

1. Connect the power to the light strip controller correctly.
2. Search the device in the App and wait for a certain period of time (see the instructions for each gateway for details). If the gateway does not find the light strip controller, try resetting or powering it up again.
3. The gateway finds the light strip controller, then we can assign it to any room or group.
4. Once the setting is complete, the light strip controller can be used.

##### 2.4G RF Remote pairing:

1. Power on the light strip controller (within 4 seconds, proceed to the next step).
2. Press the ON button on any of the groups on the 2.4G remote control to complete the pairing process.
3. After successful pairing, the light strip will flash three times.



## Compatible 2.4G RF Remote Control



GL-RC-006Z



GL-RC-009



GL-W-001Z

## Features of the MIX version



when the cursor moves at the edge of the color wheel, only the color light turns on.



When the cursor moves to the center of the color wheel, color light and white light turn on together.

## Resetting

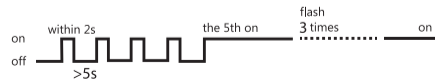
### 1. Button reset:

Press and hold the button on the light strip controller for more than 5 seconds. After the light strip flashes three times, all the LED lights will light up, indicating that the reset was successful.



### 2. As shown in the figure below:

- 1) Power on the light strip controller.
- 2) Turn off power within 2 seconds.
- 3) Wait for more than 5 seconds to ensure that it is completely powered off.
- 4) Repeat the above operation 5 times.
- 5) The light strip will flash three times, indicating that the reset is complete.



## Compatible with



Gateways	Philips Hue	Amazon Echo Plus	Smart Things	Tuya	Conbee	Homey	Homee
Item	①	②	③	④	⑤	⑥	⑦
RGB	Yes	Yes	Yes	Yes	Yes	Yes	Yes
CCT	Yes	Yes	Yes	Yes	Yes	Yes	NO
BRIGHTNESS	Yes	Yes	Yes	Yes	Yes	Yes	Yes

\*\*\*

①②③④⑤⑥ are already tested by GLEDOPTO, ⑦ are from our customers, just for your information, not verified by GLEDOPTO.



1. The product should be used under the rated voltage. Overvoltage or undervoltage use may cause damage.
2. Non-professional users should not disassemble the product directly, otherwise it may cause fire or electric shock.
3. The working temperature is  $-20-45^{\circ}\text{C}$ . Please do not use the product in areas with direct sunlight, humidity, high temperature, etc.
4. Please do not use the product in metal shielded areas and strong magnetic field areas, otherwise it will seriously affect the wireless signal transmission of the product.

### DISCLAIMERS

- \* This manual may contain inaccuracies or discrepancies of the product operations, or typographical errors. Our company will update the contents of this manual according to the improvements and changes of product functions, and regularly improve and update the software and hardware of products described in this manual. The updates will be shown in the latest edition of this manual without further notice.
- \* Due to the continuous adoption of new technologies by our company, the product parameters will be changed without any notice in prior.
- \* This manual is only for reference and guidance for customers. It does not guarantee that it is completely consistent with the actual product. The actual application is subject to the actual product.
- \* The parts, components and accessories mentioned in this manual do not represent the standard configuration of the product. The detailed configuration is subject to the packing list.
- \* All texts, tables and pictures in this manual are protected by the relevant national laws, and may not be used without permission by supplier.
- \* The copyright and right of the final interpretation of this manual are reserved by our company.